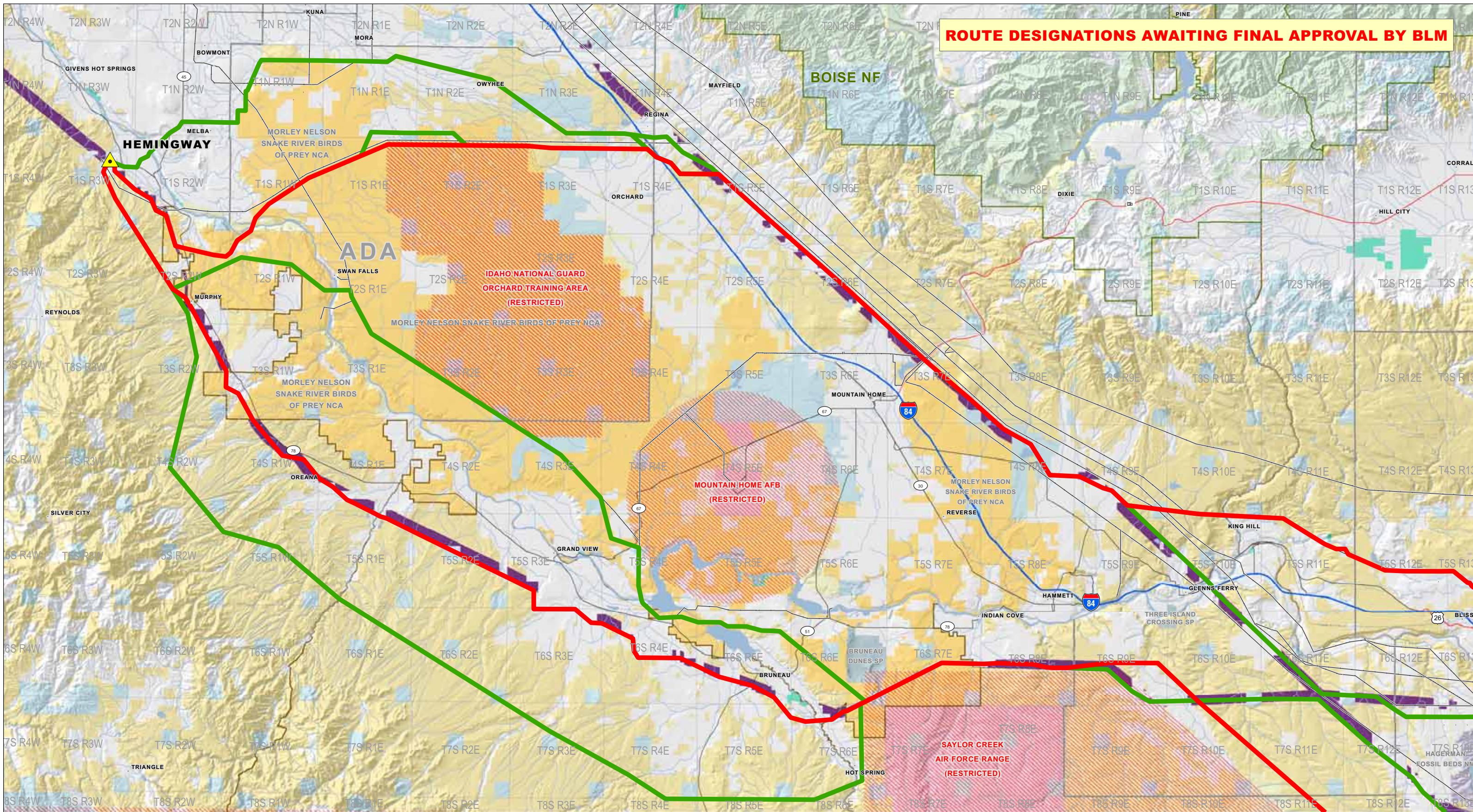


ROUTE DESIGNATIONS AWAITING FINAL APPROVAL BY BLM



GATEWAY WEST TRANSMISSION LINE PROJECT - IDAHO/WYOMING

SEGMENTS 8/9 - WEST

LAND OWNERSHIP

PROJECT FEATURES

- Proposed Route
- Feasible Alternative
- Existing Line, Energies to 500kV
- Approximate Substation Location
- West Wide Energy Corridor (WVEC)

OWNERSHIP

- Bureau of Land Management (BLM)
- US Forest Service (USFS)
- National Park Service (NPS)
- US Fish and Wildlife National Wildlife Refuge
- Bureau of Reclamation (BOR)
- Indian Reservation
- Department of Defense
- Other Federal
- State & Local
- State & Local Parks & Wildlife
- Private

Route version: 10/31/2009 (information subject to change) | Map revised: 10/30/2009

Projection: Transverse Mercator NAD 1983 UTM Zone 12N

PROJECT AREA

ENLARGED AREA ABOVE