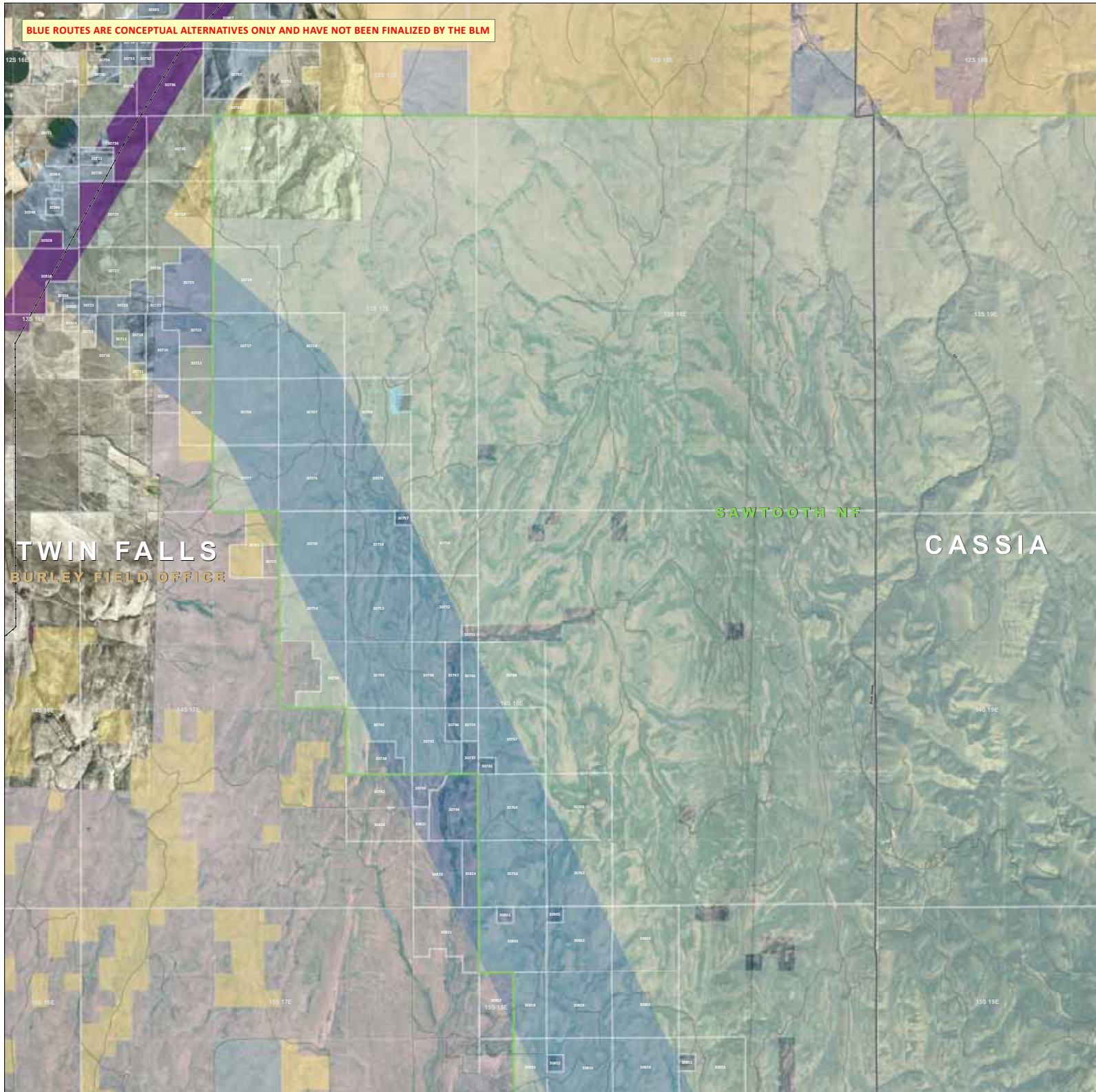
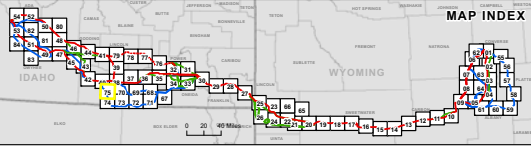


BLUE ROUTES ARE CONCEPTUAL ALTERNATIVES ONLY AND HAVE NOT BEEN FINALIZED BY THE BLM



GATEWAY WEST TRANSMISSION LINE PROJECT
IDAHO / WYOMING
ROUTE DETAIL
MAP 75 OF 84

- | | | |
|---|---|---|
| <p>Project Features</p> <ul style="list-style-type: none"> — Proposed Route Corridor — Feasible Alternative Corridor — Alternative Under Consideration — Transmission Tower Footprint Location — West Wind Energy Corridor — Storage Marker <p>Other Features</p> <ul style="list-style-type: none"> — Interstate Highway — US and State Highways — State and County Roads — Railroads — Existing Transmission Lines | <p>Administrative Features</p> <ul style="list-style-type: none"> — BLM Field Office — US Forest Service District — County Limits — City Limits — Proposed City Annexation Area — Planning or Review Corridor (P/R Corridor) — Existing or Proposed Subdivisions — Mining National System River State of Prng NCA — Military Operations Areas (MILITARY AREAS) — Centers of the West NIA Administration Area | <p>Ownership</p> <ul style="list-style-type: none"> — Bureau of Land Management (BLM) — US Forest Service (USFS) — National Park Service (NPS) — US Fish and Wildlife National Wildlife Refuge — Bureau of Reclamation (BOR) — Indian Reservations — Department of Defense — Other Federal — State & Local — Private — State & Local Parks & Utilities — Private |
|---|---|---|



©2023 Rocky Mountain Power. All rights reserved. This map is a conceptual representation of the proposed project and does not constitute a commitment by the project sponsor. The project sponsor reserves the right to modify the project at any time without notice. This map is for informational purposes only and should not be used for any other purpose. For more information, please contact the project sponsor.