

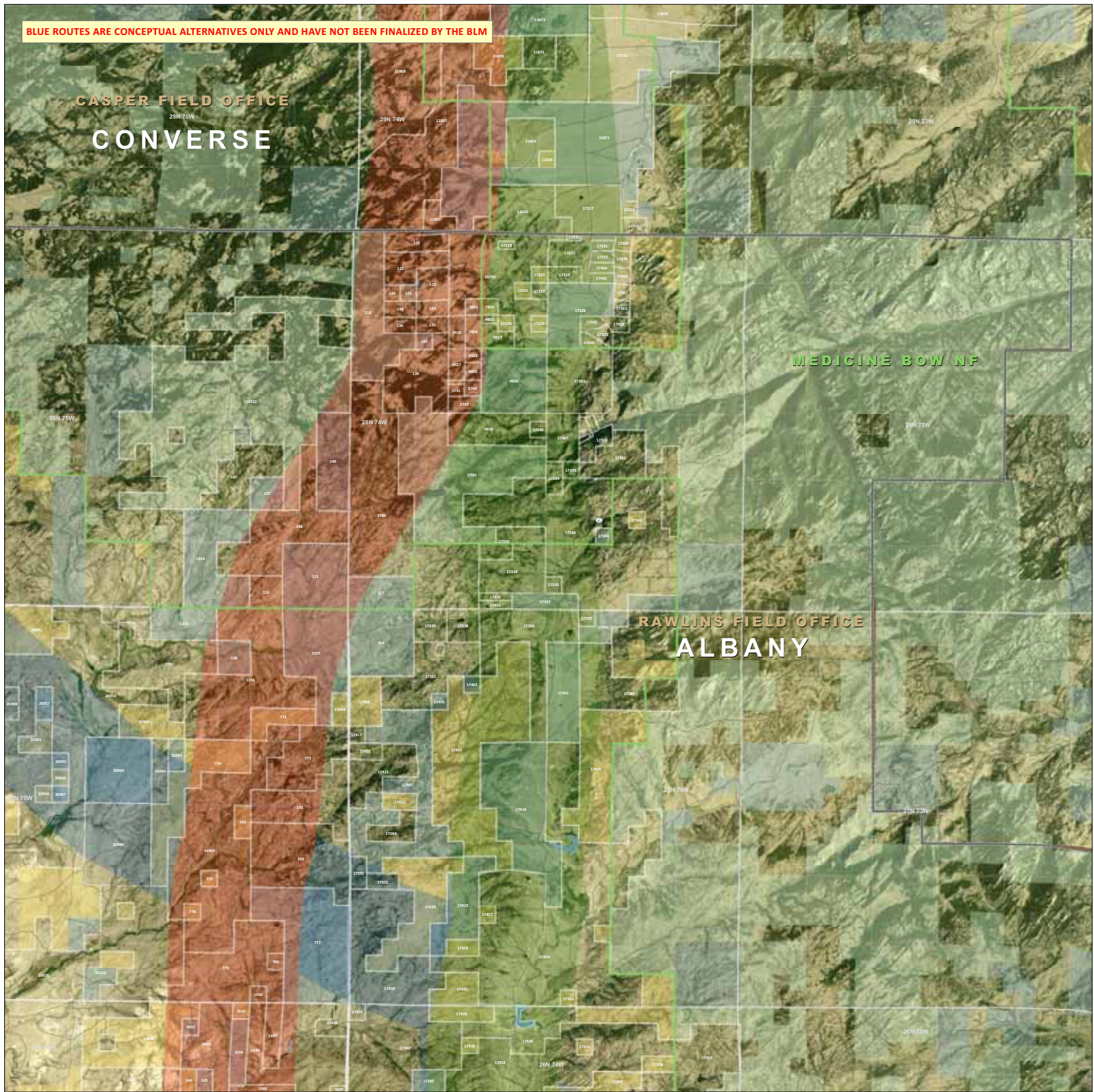
BLUE ROUTES ARE CONCEPTUAL ALTERNATIVES ONLY AND HAVE NOT BEEN FINALIZED BY THE BLM

CASPER FIELD OFFICE

CONVERSE

MEDICINE BOW NF

RAWLINS FIELD OFFICE  
ALBANY

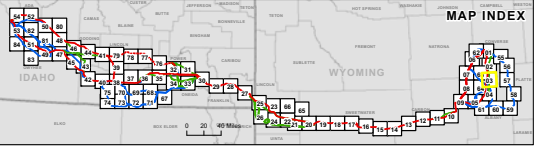


**GATEWAY WEST TRANSMISSION LINE PROJECT**  
IDAHO / WYOMING

**ROUTE DETAIL**  
MAP 03 OF 84

- Project Features**
- Proposed Route Corridor
  - Feasible Alternative Corridor
  - Alternative Under Consideration
  - Transmission/Power Plant Location
  - West Wind Energy Corridor
  - Storage Marker
- Other Features**
- Interstate Highway
  - US and State Highways
  - State and County Roads
  - Railroads
  - Existing Transmission Lines
- Administrative Features**
- BLM Field Office
  - US Forest Service District
  - County Limits
  - City Limits
  - Proposed City Annexation Area
  - Planning or Review Corridor (PRC) boundary
  - Existing or Proposed Subdivisions
  - Inventory Network Status Area (INSA) of Prop. NCA
  - Wildlife Operations Area (WOA) (shaded areas)
  - Centers of the BLM 100-Administration Area

- Ownership**
- Bureau of Land Management (BLM)
  - US Forest Service (USFS)
  - National Park Service (NPS)
  - US Fish and Wildlife National Wildlife Refuge
  - Bureau of Reclamation (BOR)
  - Indian Reservation
  - Department of Defense
  - Other Federal
  - State and Local
  - State and Local Parks & Utilities
  - Private



Project: Gateway West Transmission Line Project, IDAHO / WYOMING. Date: 10/20/2023. Scale: 1:50,000. Contour Interval: 20 feet. Elevation: 5000 feet. Projection: NAD83 UTM Zone 12N. Units: Feet. Source: BLM, USFS, NPS, BOR, IDOT, WYDOT, and other agencies. All rights reserved. No warranty is made for the accuracy or completeness of the information provided. This map is for informational purposes only and does not constitute a final design or construction plan. For more information, contact the project manager at 208.387.1000.